

Julie Baverstock

Biography

Having spent 20 years living and working throughout the Pacific with my family, I returned to NZ in 1998. Although my background is predominantly in the medium of paint four years ago I began to explore the possibilities of cast glass. I have recently completed a one year casting course run by Artstation in Auckland.

My work is usually based around everyday objects. It is my intention to take a mundane object, which is often overlooked, and recreate it as something special. The works often possess a slightly whimsical nature, aimed at engaging the viewer.

Sculptures

Glass Fence
Cast glass
\$490



Glass Fence with Gate
Cast glass
\$490

Phil Bonham

Biography

Phil Bonham employs the many skills gained during his career to a wide variety of art forms. He majored in printmaking for his Fine Arts degree at the University of Hawaii, returning to New Zealand in 1972.

There followed a time when printmaking gave way to ceramics, watercolours, drawing and teaching in North Hokianga. After moving back to Auckland he exhibited photography, then wood sculpture followed by stone carving, all while remaining a teacher of art and craft at Michael Park School.

It is seldom a sculptor and artist has such breadth of talent to exhibit across such a wide range of disciplines. In this exhibition Phil's piece 'Norfolk Nymphs' is the second piece of Norfolk pine log that he has worked.

"I have hollowed to expose the inner growth of the branch nodes. The structure of this tree is so emphatic and the colour of the knots so different than the rest of the wood that I cannot conceive of ignoring this when carving the wood. Consequently, the structure of the tree is an overriding feature of this series of carvings. The nymphs were noticed when drawing lines on the subtle ridges that angle around the trunk...removing wood from the depressions between produced a framework for the lattice."

Sculpture

Norfolk Nymphs
Norfolk pine
\$4,500



Paul Bottomley

Biography

Paul Bottomley's interest in art began from the age of ten, at Kaitao Intermediate. In 1996, while attending high school, Paul started to create 2metre clay sculptures. The positive comments on these works inspired him to focus on Maori themed clay sculptures. "I liked the idea of playing around with traditional Maori design and making it more contemporary."

Paul is currently working towards his Diploma in Art & Design (Advanced) at Waiariki Institute of Design. He still works large scale and, greatly influenced by contemporary Maori design, is creating work from Oamaru stone and native timber.

Sculpture

Kaitiaki (aka Taniwha)
Oamaru Stone
\$6,000



Brigitte Brandeau

Biography

Throughout my education, Sorbonne University (Fine Arts) and the Ateliers de Beaux Arts de Paris. I always addressed sculpture as both theory and practical, intimately linked.

I continued as a professional sculptor also spending many years working with the creation and animation of characters in 2D and 3D for cinema and television.

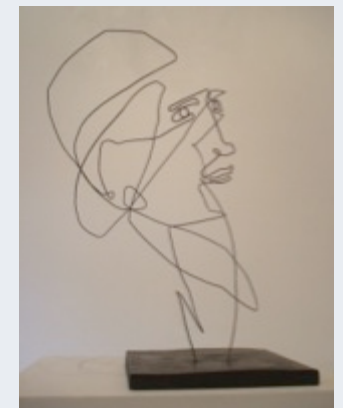
With time, my sculpture has evolved towards more ephemeral shapes, changing ones, more subtle ones. As paradoxical as that may sound, I love shapes that disappear... I love leaves of trees, the wings of birds, shapes that leave gravity behind... I

Sculptures

The Kiss
Steel wire
\$500

Blue Angel
Steel wire
\$250

Long Neck
Steel wire and Japan paper
\$250



Rudi Buchanan Strewe

Biography

Rudi trained as a motorcycle mechanic mostly working on restoring classic motorbikes. Often this entailed fabricating or sometimes casting parts. This led to building a forge for blacksmithing when he was 16. He taught himself the lost wax casting process and he now casts jewellery in bronze or silver and sculptures in bronze and aluminum. He also likes working with copper finding it a good material to fabricate and forge into sculptures. Living in the Waitakere ranges surrounded by the bush gives him his inspiration.

Sculptures

Spectators
Bronze
\$850

Diggers
Bronze
\$850



Will Clijsen

Biography

Will, is an expressive artist and bronzecasting specialist. In 1988, after he studied at the Academy of Arts in Tilburg (The Netherlands), he went to the south of France with Bart Aerts, a renowned bronze caster from Antwerp (Belgium). They set up a bronze foundry and here Will learned all aspects of the old and noble craft of bronze casting. After an apprenticeship of three years, he started his own foundry and in the following 12 years he worked on projects and exhibitions throughout the whole of France (Paris, Nice, Toulouse, Bordeaux).

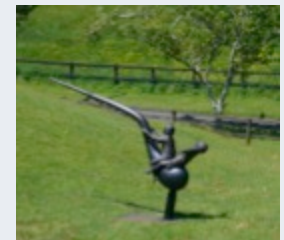
One of the prestigious works is a monumental bronze sculpture, 2.20 metres in height, which stands in the square in front of the cathedral of Chartres, (which attracts one million visitors every year).

Will returned to The Netherlands in 2002, living in Amsterdam he had his workshop in the former Bruynzeel factories in Zaandam. Castings were done at the "Kameleon", a bronze foundry in Haarlem.

His own creations are mostly stylized, but sometimes recognizable, shapes. Often the definite form of the sculpture evolves during the process of modelling. It remains a search for harmonious result, combining lines, volumes, structures and colours, whereas a lot of work is done intuitively; for Will the possibility of free interpretation is very important.

Sculpture

Kiwi Riders
Bronze (300kg) with steel
support
\$27,000



Di Conway

Biography

Wellington sculptress Di Conway is widely known for her 'fat-lady' sculptures created in her converted shed, at her home. Di describes these mischievous, earthy figures as having the ability to convey the celebration of "the JOYS and sometimes the 'OY'S' of life". It is through these quirky, humorous figures and the underlying social commentaries about life, and empowerment of women that they embody, that Di has established a cult following in Wellington and an appreciation of her work in many other places in the world.

Although Di works in both bronze and clay, she has been working more in stoneware recently. She says she enjoys this medium; taking pleasure in sketching the clay and "just letting what happens, happen". Each sculpture is a unique piece.

Sculpture

In My Dreams I Fly
Stoneware
\$375



Terry Haines

Biography

Using materials such as stone, wood, steel and concrete Terry Haines incorporates nature and personal experience into his varied and thoughtful works.

Coming from a carpentry background, Terry teaches at Hungry Creek Art School.

Winner of several awards for his sculpture, including; NZ Sculptor Design Award, Waikato Home and Garden Show, and

Trends Sculptor of the Year Award, Waitakere Home and Garden Show.

Terry's work is well represented at exhibitions and in private collections throughout the North Island.

Sculptures

Beyond
Taranaki Andesite
\$2,700



Balance 1
Granite and marble
\$350

Balance 2
Basalt and marble
\$350



Brenda Hart

Biography

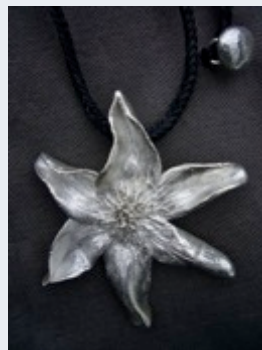
With a long standing interest in making jewellery Brenda Hart began her professional career after training at Hungry Creek Art and Craft School, Puhoi; (Diploma, 2005, and Honors, 2006).

Brenda's work is deeply respected and admired. As well as having been sold to collectors around the world her jewellery has been exhibited widely, (as far afield as Anchorage in Alaska), and has previously been sold at the Auckland Museum and Te Papa Museum, Wellington.

She has developed a reputation for exquisite quality and originality and gone on to extend her range as a jeweller with a specialist enamel course in the USA with Katherine Osgood.

Sculptures

Selection of Jewellery
Silver and other metals
As priced



William Jameson

Biography

William Jameson works mainly in steel and other metals. He completed studies in Fine Arts at EIT in 1999 after a previous life as a farmer in Central Hawke's Bay.

William has exhibited widely over the last decade, and his practice includes the design and manufacture of street furniture and sculpture for the urban landscape, as well as artwork for the domestic environment. He frequently collaborates with other Hawke's Bay sculptors to create large-scale public artworks, and was extensively involved with the rejuvenation of inner city Hastings.

Sculpture

Waka
Mild steel with chromed stands
\$6,500



Joe Kemp

Biography

Joe Kemp, was born in Christchurch but now lives on the edge of Lake Rotoma. His tribal connections are Ngai Tahu, Ngapuhi and Te Arawa (Ngati Makino).

He found his sculpting ability eight years ago. Self-taught, he finds it a great privilege to be able to create, and senses a connection with Tane Mahuta (the life force of the tree) when working with the wood. He also carves a variety of stone, the connection here being with Papatuanuku (Earth Mother). He looks to bring out the Wairua (essence) in each piece, starting where the material originated and using any special features and grain.

“Sculpting human form connects me with my ancestral history which brings a whole new meaning and purpose to the finished art work. I enjoy carving human form, especially females. Wood is my main medium and I enjoy the secrets and surprises that our native timbers have with them, it is quite a special feeling.”

Sculptures

Te Heru Ora

Macrocarpa and acrylic pant

\$3,870

Rata

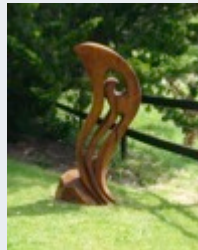
Swamp Rata with Macrocarpa base

\$6,940

Te Kete Ora

Macrocarpa and Pohutukawa

\$25,000



Anna Korver

Biography

Anna Korver is an established New Zealand artist, producing sculpture in wood, stone, metal and other materials. She is a graduate of the University of Canterbury, School of Fine Arts, completing a Bachelor of Fine Arts degree in sculpture in 2003.

While Anna utilises a range of media, she favours direct carving and was taught to carve by her father at a young age. Thematically the work explores the place and role of women in society. Through her portrayal of the human form, she expresses her interest in the influence of physical appearance on emotional states.

Employing the method of direct carving allows the natural stone or wood to influence the process and the final form.

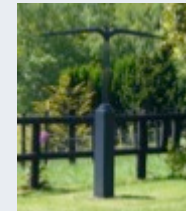
Works are held in many collections, throughout New Zealand and internationally.

Sculptures

Bird

Forged steel

\$9,000



Black Granite Pod

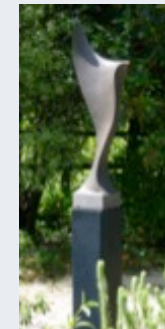
Black granite on steel base

\$2,500

Light and dark of me

Marble, granite and steel

\$5,900



Untitled

Laperla

\$1,950

Bluestone Wing

Bluestone and steel

\$3,900

Macrocarpa Woman

Macrocarpa

\$3,900

Duncan Leask

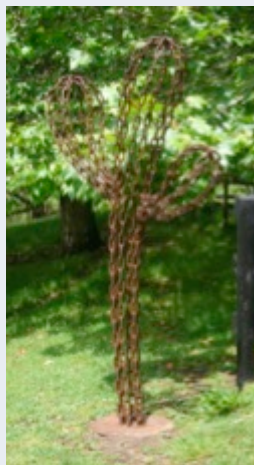
Biography

Duncan has been described as a "bloke's artist". A hands-on manipulator of tools and materials he is known for his funky sculptures, which sell throughout New Zealand.

Based in Nelson, Duncan works predominantly in steel and chain, creating indoor and outdoor sculpture. Recently he has developed a series of large Cactus works, which can be situated inside or out.

Sculpture

Chainocactus
Welded chain
\$2,850



Steve Molloy

Biography

Steve Molloy began sculpting in Hokitika and his work has been exhibited extensively throughout New Zealand. He has six public works to his credit and many works in private collections. Attending many national and international symposiums working in a range of materials Steve's work explores themes involving his connection to the land and bush. Much of his past work has been in areas such as the Southern Alps.

He is an active member of Eco Artists New Zealand, a charitable trust, which raises funds through the sales of artworks to benefit environmental projects in New Zealand, particularly focusing on native species and their environments.

Sculpture

Ascending Chevrons
Red Brazilian granite
\$6,300



Chris Moore

Biography

Artist and blacksmith Chris Moore has been sculpting and exhibiting in forged metal for over 10 years.

Chris was trained in traditional blacksmithing and wrought iron restoration in the UK. His forge work has graced some of England's finest buildings, including St Paul's Cathedral

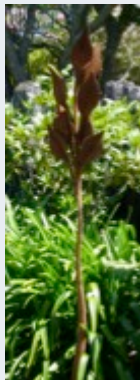
Chris's work is largely inspired by nature and movement, heating and forging metal over an anvil gives the work a richly textured and organic feel, which is not easily achieved with steel fabrication.

Recently he has resumed working in bronze using the "lost wax" technique giving him the opportunity to incorporate figurative pieces with his work.

Sculptures

Sapling
Forged steel
\$1,550

Divide
Forged steel
\$1,780



Trevor Nathan

Biography

Trevor Nathan has been sculpting full time since 2003, working primarily with Oamaru limestone and New Zealand native woods. He plays with light and shadow, so that the viewer's perspective alters as the light conditions change throughout the day. He also likes to draw the viewer's eye around and through the work.

As an adult student of Art and Design at Waiariki Institute, he found a passion for three-dimensional form, and for stone, and never looked back. Of New Zealand Maori and European descent, he is strongly influenced by his dual heritage and the impact of both cultures in contemporary New Zealand society.

Sculptures

From Tori Gates
Oamaru Stone and Totara
\$3,350

Leaf
Oamaru Stone
\$2,400

Contemplation
English Oak, oils on a painted steel
base
\$4,000



Pam Olver

Biography

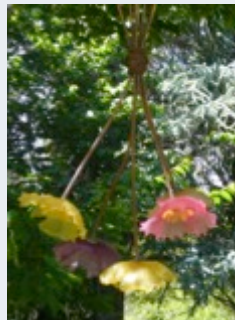
Working in glass and copper, for more than 10 years, Pam Olver follows a passion for art she has had since childhood.

Her work has been exhibited in New Zealand, Australia, Hong Kong and USA and is held in private collections around the world.

From an old boathouse in East Auckland she develops her ideas and forms the wonderful bright coloured glass works that have become her trademark. As well as tutoring in glass her work has been included in NZ Glass Art, to which she also contributed technical advice.

Sculptures

Glass Poppies
Glass and copper
\$1,040



Jocelyn Pratt

Biography

Jocelyn enhances the natural qualities of stone presenting stylish simplicity in her works. She has participated in more than 50 symposia, working with national and international sculptors.

Jocelyn's passion is sculpting hard volcanic stone - andesite, basalt and granite but also works with marble, limestone and other sedimentary and ignimbrite stone. She prefers creating large sculptures but occasionally completes small works for exhibition.

Sculptures

Glacial Release
South Island schist on basalt base
\$5,600



Liz Sharek

Biography

Liz Sharek's current bodies of work are "meant to be placed in contexts where they can act like small interventions initiating conversations about the place or the things they find themselves with. I have been looking at the work of street artists like Slinkachu and Banksy, whose pieces are often placed contextually within the urban environment to create interesting dynamics and juxtapositions."

Currently living in Auckland Liz recently completed a Masters degree in Art and Design at AUT, and holds qualifications in Botany and Physiotherapy. Her works in glass and porcelain are held in very high regard.

Liz's work is represented in the National Collection at Te Papa Tongarewa, the Museum of New Zealand.

Sculpture

Glass Rabbit
Cast glass
\$350



Richard Wells

Biography

Richard is a sculptor inspired by childhood in the South Island, his figurative sculptures echo the forms the land takes. Using traditional methods and medium these sculptures tell human stories in a contemporary context.

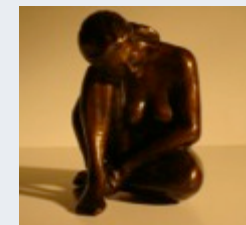
Tutored by prominent and respected New Zealand artists Matthew Browne, Anton Chapman, Michael Easton and Roderick Burgess in Auckland. He furthered his studies in Paris under the French sculptor Brigitte Brandeau, a senior tutor at the Maubeuge Atelier, Gare du Nord in Paris. Richard regards his time in France as highly influential to his current practice.

Sculptures

Contour
Bronze
\$1,500



Secret
Bronze
\$950



Glass Dancer
Cast glass
\$950

Wendy Whitehead

Biography

Wendy Whitehead describes her jewellery as 'contemporary wearable artworks'. She explains her creative process as "absorbing and interpreting my Maoritanga, and giving it voice through my artwork". It is certain that her pieces are more than just items of adornment.

As an accredited holder of the Toi Iho trademark, (Maori made), Wendy brings impeccable craftsmanship and guaranteed authenticity to her pieces. This background has provided many major exhibition opportunities and her work is held in collections around the world.

In 2008 Wendy participated in the Toi Maori- Small Treasures - exhibition at the De Young Museum in San Francisco, following on from an earlier San Francisco exhibition at the Yerba Buena Centre in 2005.

Her works have been widely shown throughout New Zealand, including participation in several Toi Iho exhibitions at Te Papa Tongarewa, Wellington.

The materials used are both traditional and contemporary;

Metal - silver, gold, titanium, aluminium, copper

Stone - pounamu (greenstone), greywacke

Paua (abalone), feathers, wood

harakeke (flax), muka (flax), wool, nylon, and rubber

Sculptures

Toi Iho Jewellery Selection

Silver and other elements

As priced



Keryn Whitney

Biography

Keryn Whitney studied glass techniques and technology in England. She is a glassmaker by trade, but has found a crossing over of ideas into garden sculpture. She has also made entries for the World of Wearable Art, and her work has been selected four times, winning the Shell Sustainability Award 2010, in the process.

All her entries have been retained for ongoing display in the World of Wearable Art museum in Nelson; and her glass is held in private collections in England, Italy, USA, Australia and New Zealand.

Living in the Hawkes Bay, Keryn finds much of her work relates to how we see our world and the relationships we have with our environment.

Sculptures

French Sheep

PVC and Polystyrene

\$200 each



Wool and Needles

Vineyard netting and pipe

\$3,500



Marti Wong

Biography

Marti Wong is a self-taught artist who has been honing his skills for over 30 years. Drawing and sketching since before school, his keen observation and eye for detail all translate beautifully into his sculpture. He has been welding and doing recycled steel sculpture for 13 years and created hundreds of works, ranging from small spoon and fork men to life-size dinosaurs and dragons. Marti is inspired by the amazing creatures and animals of our amazing planet, past and present, and is strongly influenced by the fantastical and science fiction. Recently he has been experimenting with wood sculpture and glass casting, which he hopes to incorporate into his metal sculpture one day.

Sculptures

Spinosaurus
Found metal object
\$25,000



Terra Charcharodon
Found metal object
\$4,500

Frog
Found metal object
\$750



Stegosaurus
Found metal object
\$1,600

Bruce Young

Biography

Bruce Young was originally from Invercargill, the son of a panelbeater. Now a sculptor and steel boatbuilder, in fact he worked in museums most of his working life.

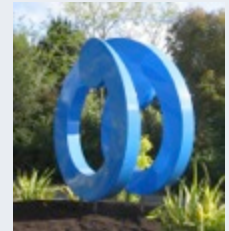
Exhibiting as a sculptor in the early days gave way to boatbuilding as a spare time interest. Turning back to sculpture, commissions have included birds and gates, a range of leaves and flowers, and larger abstract works, which draw on his steel yacht plating experience.

Bruce has a liking for objects, how they are made, the aging of the surfaces, the structural problems. Much of his work is designed with gardens in mind, as the size and dynamic form of much of his work is suited to expansive areas.

Sculptures

Big Blue
Blue painted steel
\$18,000 (Sold)

Similar works can be commissioned



Biplane
Heavy steel wire, painted
\$1,300

Interflect
Stainless steel
\$4,500

